

CUSTOM SETTINGS
Select tile to customise



Temperature



Humidity



Ventilation



Schedule



Activate features



System settings

HOME

Touch to return to the home page as displayed here

INFORMATION

Touch to access information about the active screen

BOOST

Touch to activate 100% fan speed for 20 min

MODE

Touch to activate the mode scheduler

AUTO

Touch to activate automatic temperature and humidity control

ECO

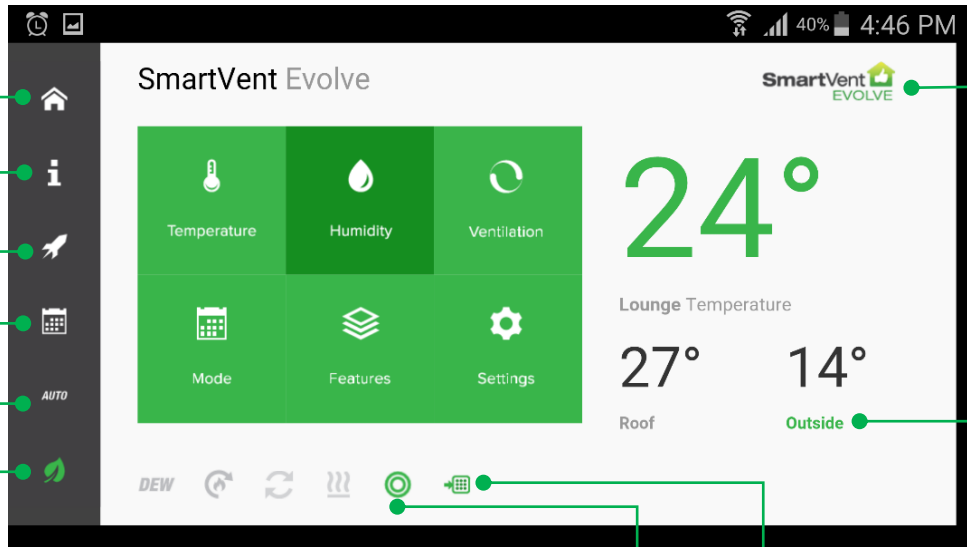
Activate the ECO mode to save energy. Adjust ECO level in Features

SYSTEM STATUS

Icons **green** when installed and active.



Touch icon to control, select, and or make changes.



ON/STANDBY

Touch logo.

Logo turns grey in Standby.

AIR SOURCE

Green label denotes air source

DEW

Condensation control



Recycle air*



Heat transfer*



Tempering heater*



Standby



On

* Upgrade kit required to enable

FAN SPEED

Low

Medium

High

Off

FILTER

Good

< 50%

Replace

MODE Settings

MANUAL

Your desired **Temperature**, and **Humidity** can be adjusted to suit your personal comfort. EVOLVE will take care of the rest.

Ventilation settings can be adjusted for continuous ventilation at the set values when required. Outside and Recycle are available with the optional upgrades^{1,2}.

Auxiliary fan settings under **Ventilation** require an additional fan kit.

AUTO

EVOLVE uses its multiple sensors to determine the best air source¹ based on both temperature and humidity.

EVOLVE also adjusts fan speed to deliver the right amount of air to achieve your **Desired** settings.

EVOLVE will work to achieve a comfortable balance between your selected **Desired Lounge** or **Desired Bedroom Temperature**, and **Humidity** settings.

¹ Summer Feature Upgrade required.

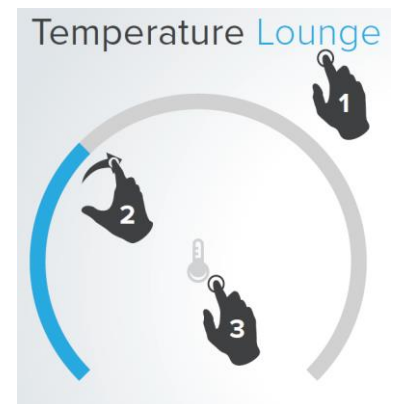
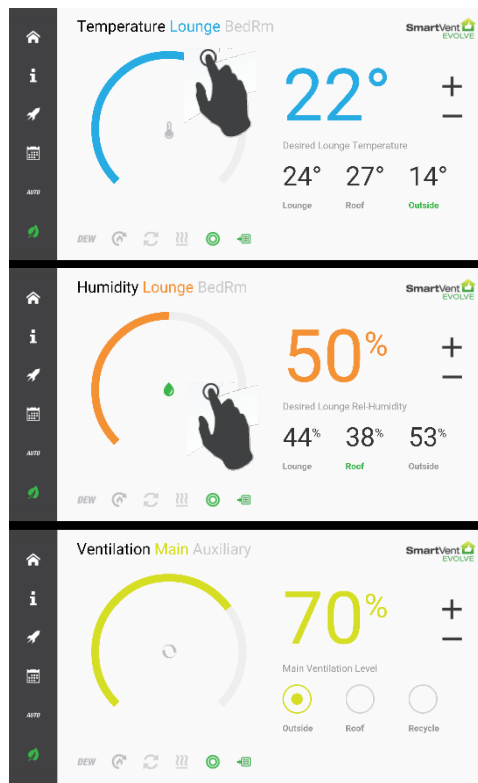
² Heat Transfer Upgrade required.

CHANGING SETTINGS

- For **Temperature**, and **Humidity** select your **Room**, for **Ventilation** select your **Fan**
- Adjust the set values

Touch **+** or **-** to adjust values

Or Touch and drag the coloured ring segment to adjust values



- Activate/deactivate settings by pressing the icon in the centre of the colour dial.

NOTE: DEW function, when activated, may temporarily override desired settings to fight condensation.

Default values shown above.

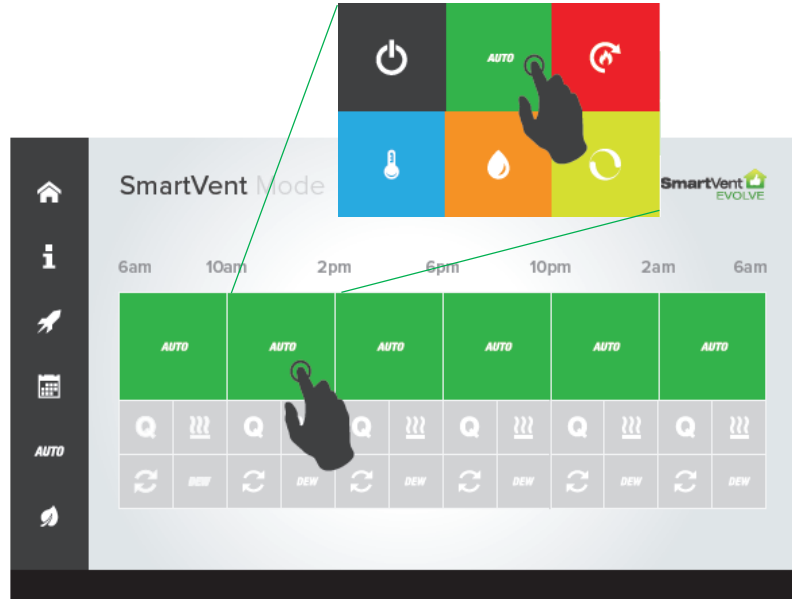
AVAILABLE SCHEDULE MODES

- STANDBY
- AUTO
- HEAT TRANSFER*
- TEMPERATURE
- HUMIDITY
- VENTILATION

ADDITIONAL SCHEDULE MODE QUIET

For those times when you want quiet, Evolve will lower the fan speed tolerance reducing air transfer noise.

Touch to select. Icons are coloured when enabled.



DEW
Condensation control

Recycle air*

Heat transfer*

Tempering heater**

* Heat Transfer Upgrade kit required to enable

** Tempering Heater required to enable

SETTING THE SCHEDULE

- Select the **MODE/s** to activate/deactivate for the selected time slot.

Active modes appear in colour.
- Select the next time slot or tap the icon to activate/deactivate your settings and schedule

CANCELLING THE SCHEDULE

Cancel the schedule by selecting **AUTO**, or by tapping the icon. It will turn white when deactivated.

ECO

Select an ECO level. As long as your temperature and humidity criteria are met the system will cycle the fans as selected.

- Turns the fan off for 20 minutes at 60% then on for 40 mins.
- Turns the fan off for 20 minutes at 60% then on for 20 mins.
- Turns the fan off for 40 minutes at 60% then on for 20 mins.
- Turns the fan off when not required.

HEAT TRANSFER

Activate HEAT TRANSFER to make better use of your heating in winter. In this mode excess heat from the heat source room is transferred to other rooms in your home when the source room temperature exceeds your **Desired** set temperature.

Tap to select, enable. Icons are green when enabled.

TECHNICAL SUPPORT

If you have performance concerns contact your installer in the first instance. For further assistance contact SmartVent Technical on 09 259 1662.

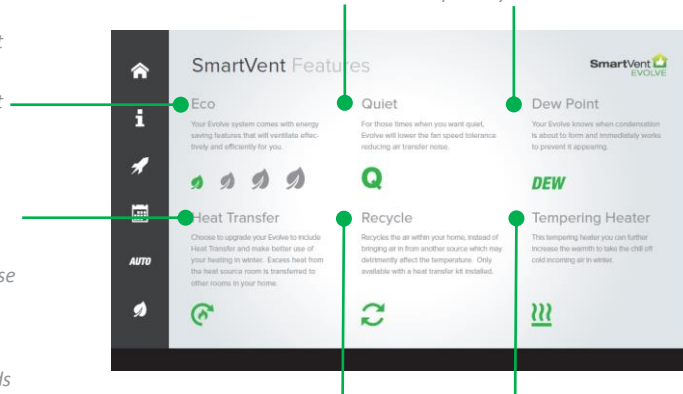
Distributed by: **Simx Limited**
Simx reserves the right to alter technical specifications without prior warning.

QUIET

Enable QUIET in the MODE schedule for those times when you want quiet. EVOLVE will lower the fan speed tolerance reducing air transfer noise.

DEW POINT

Enable DEW POINT for EVOLVE to detect when condensation is about to form and immediately work to prevent this happening. DEW POINT may temporarily override manual settings.



RECYCLE

Mixes the air inside your home when other air sources are not desirable.
* Upgrade kit required to enable

TROUBLESHOOTING

If you experience a disconnection from your system, follow the adjacent connection guides to reconnect.

TEMPERING HEATER

Turns on your tempering heater when air sources are supplying cold air.
* Upgrade kit required to enable

WIRELESS CONNECTION

Connect to EVOLVE wirelessly from any device, find the EVOLVE router in your WiFi list then enter the Password.
SSID: evolve Password: smartvent

EVOLVE Features & Settings

SETTINGS

LOGIN
User Name: **admin**
Password: **evolve** (evolve backwards)

SET CLOCK TIME
User adjustable.

HEATTRANS
User adjustable

THRESHOLDS
Advanced user settings

SCHEDULER
Advanced user settings

FILTER
Select **RESET Timer** to reset to 0%.

FIRMWARE & WEB
Reference only, no user settings.

RESET
Factory RESET.

ENABLE ADD_ON
Advanced user settings

EVOLVE CONTROLS

To open the EVOLVE controls, open a web browser, type in the website address (URL) below, and book mark it for future use.
URL: 192.168.1.170

For further information on EVOLVE scan the QR code or visit www.smartvent.co.nz.



General enquiries ph: **0800 140 150** | Technical support ph: **09 259 1662**
W: www.smartvent.co.nz / www.facebook.com/SmartVent
E: enquiry@smartvent.co.nz